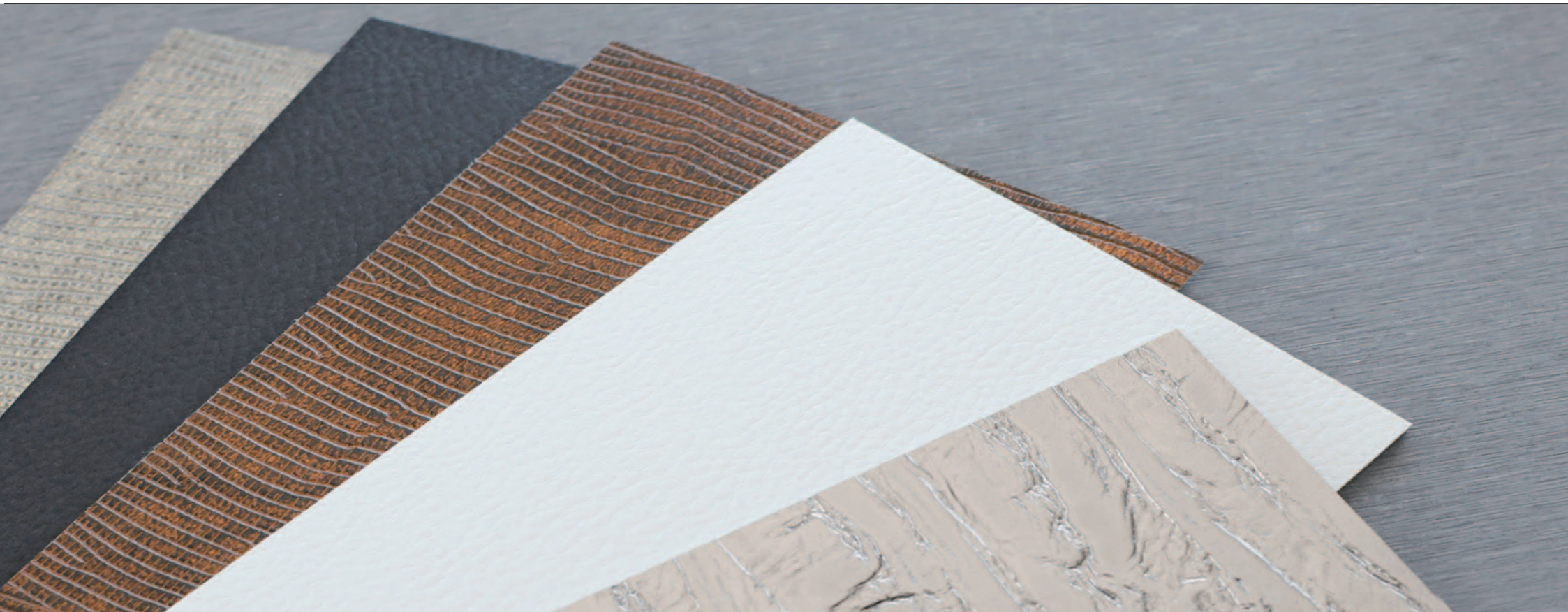


HPL LEATHER SHEETS





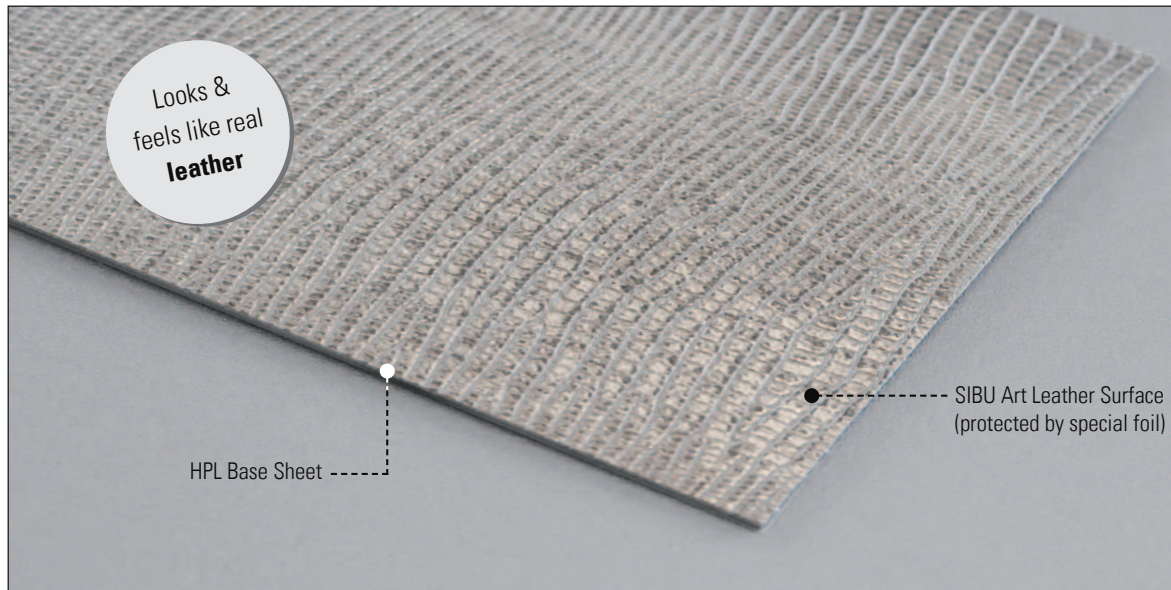
SIBU HPL LEATHER SHEETS

the simplest way of bonding!

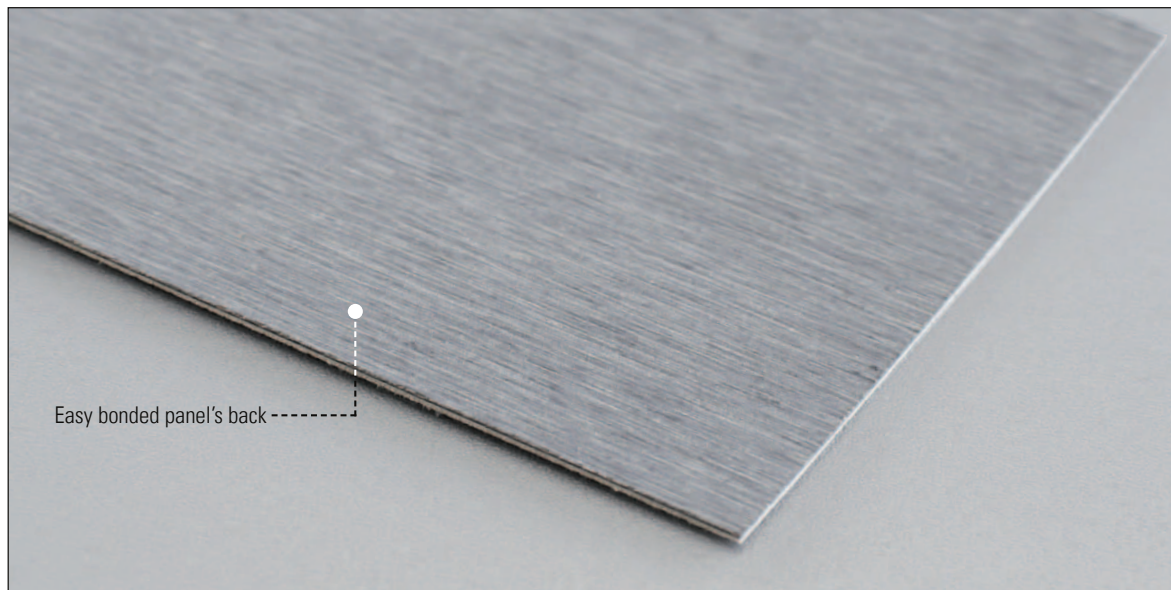
The brand new SIBU HPL leather sheets for the first time combine the well known HPL manufacturing technology with the high standards of SIBU DESIGN to art leather surfaces.

Our sales team provides you with further information!

HPL LEATHER SHEETS Composition



Composition on the example of HPL LL Leguan



Back of the HPL leather sheet

COMPO- SITION

Besides 10 HPL leather sheets on stock that we can deliver within shortest delays, we also offer other variations with minimum order quantity of 10 items.

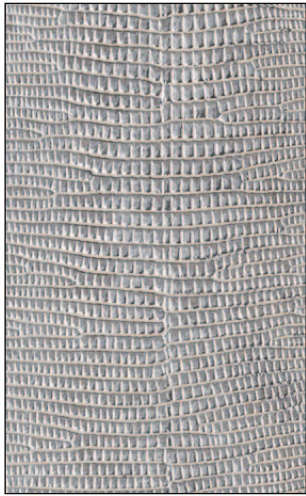
Our sales team provides you with further information!

HPL LEATHER SHEETS Delivery Programme

(Delivery, starting at 1 pc.)

100%
PVC
FREE!

SIBU
DESIGN



HPL LL Leguan Silver



2780x1280x1,8

NA 15893



HPL LL Leguan Copper



2780x1280x1,8

NA 15894

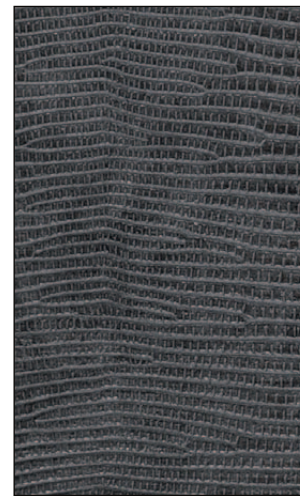


HPL LL Leguan Gold



2780x1280x1,8

NA 15892



HPL LL Leguan Nero



2780x1280x1,8

NA 15895



HPL LL Leguan Bianco



2780x1280x1,8

NA 15896



HPL LL White



2780x1280x2,3

NA 15891



HPL LL Creme



2780x1280x2,3

NA 15886



HPL LL Dark Brown



2780x1280x2,3

NA 15889



HPL LL Black



2780x1280x2,3

NA 15885



HPL LL Mocca matt



2780x1280x2,1

NA 15900

All variations
available in
format
2780x1280mm

HPL LEATHER SHEETS Delivery Programme

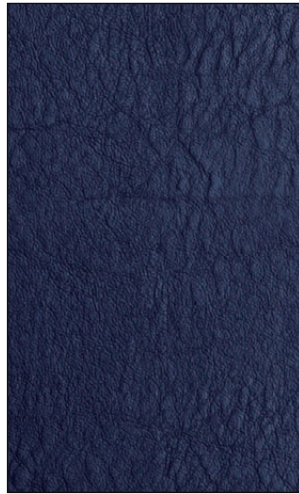
(Delivery, starting at 10 pc.)

100%
PVC
FREE!

SIBU
DESIGN



HPL LL Bianco matt 
2780x1280x2,1 **NA 15899**



HPL LL Azzuro matt 
2780x1280x2,1 **NA 15902**



HPL LL Nero matt 
2780x1280x2,1 **NA 15901**



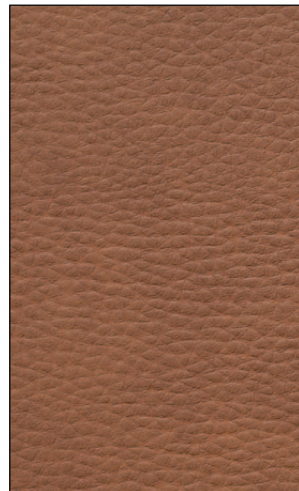
HPL LL Stone Grey 
2780x1280x1,8 **NA 15883**



HPL LL Caramel 
2780x1280x1,8 **NA 15884**



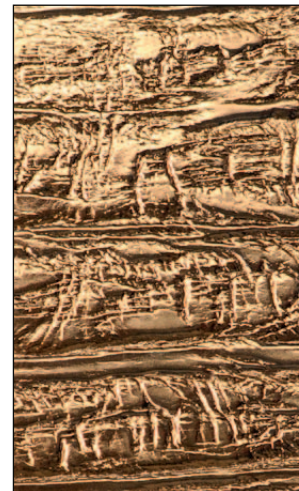
HPL LL Beige 
2780x1280x2,3 **NA 15887**



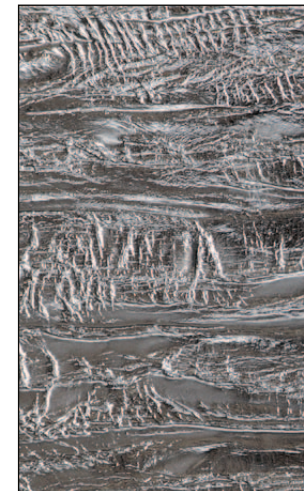
HPL LL Brown 
2780x1280x2,3 **NA 15890**



HPL LL Red 
2780x1280x2,3 **NA 15888**

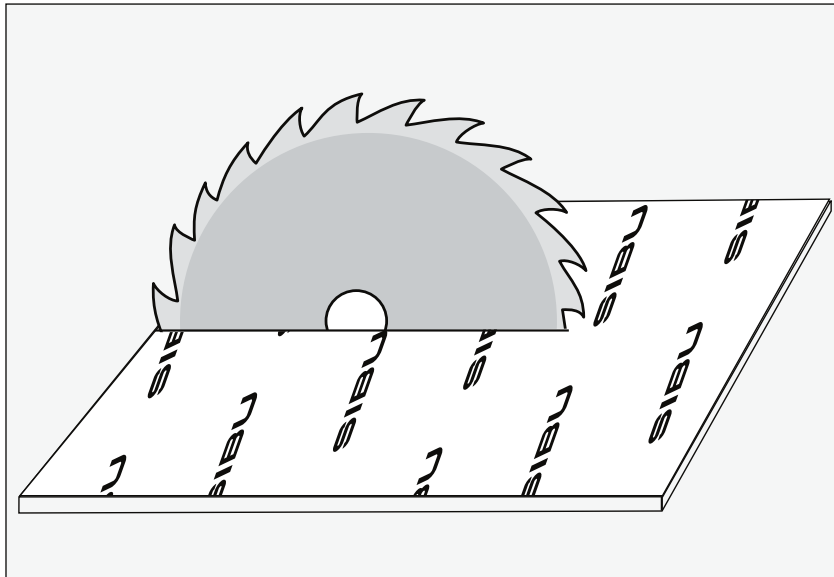


HPL LL Persian Gold 
2780x1280x2,3 **NA 15898**



HPL LL Persian Metallic 
2780x1280x2,3 **NA 15897**

All variations
available in
format
2780x1280mm



Sägeblatt

SAW BLADE

To ensure the lint and twine free processing we offer an especially shaped saw blade.

Article Number: 16027



Further Informationen:

Sheet split up saw

Diam: 255 mm (10 in.) with 30 mm (1.18 in.) mounting hole
Blade thickness: 2.8 mm
Number of teeth: 80
Execution: FZ/WZ
RPM: 6,000-6,700

Format circular saw

Diam: 300 mm (11.8 in.) with 30 mm (1.18 in.) mounting hole
Blade thickness: 3.2 mm
Number of teeth: 90
Execution: FZ/WZ
RPM: 5,000-5,800

ATTENTION: Putting an underlay above and beyond the sawing surface will render the best cutting quality!

i For 20 mm mounting hole, we add a reducing ring, for mounting hole with bigger diameter, the hole will be upgraded. Please, indicate the details concerning the purchased saw blade.

HPL LEATHER SHEETS Product Characteristics

Special characteristics:	none
Composition:	HPL coated with LL surface
Temperature resistance:	The temperature characteristics of SIBU products do not alter in conjunction with the HPL plate.
Inflammability:	fire protection classification is still in work, B2 probable
Suitability for wet rooms:	to a limited extent
Abrasive stability:	normal scratch resistance
Cleaning:	cleaning only with soapy water and rag
Storage:	flat on pallet, dry, protected against light and dust
Processing:	For lint and twine free processing (sawing), please, use our special saw blade designed for these purposes (SIBU article no. 16027). In case of non-use of this saw blade, the post processing cut of the edges is to be performed.
Thickness:	1.8-2.3 mm (see delivery program)
Weight:	6-7 kg/panel
Package:	flat packed / rolled (only for transportation without storage! Max. 4 panels)

NA non-adhesive

 suitable for wet rooms



SIBU DESIGN GmbH & CoKG
Jupiterstraße 8 / 4452 Ternberg / Austria / Tel.: +43(0)7256.6025.0
Fax: +43(0)7256.7020 / www.sibu.at / E-mail: info@sibu.at

NEWS UP/DATE

07/11