

IM- PRES- SIONS-SIONS



Photo: dieeinrichtung Manzenreiter

SIBU
DESIGN



LL REGGAE

Photo: HAKA



SL RACE Vintage Copper/Silver

Photo: Intuo



LL FLORAL White/Silver matt

Photo: www.merx.ua



SL IMPACT Antique Bronze



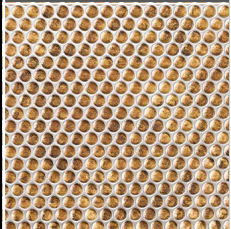
Photo: © amst - fotolia.com



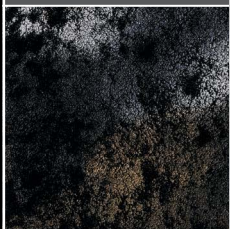
LL FLORAL White/
Silver matt



DM Silver AR23



SL RACE Vintage
Copper/Silver



LL REGGAE



SL IMPACT
Antique Bronze



DM Silver AR23



PL 3D ROSES Pearl White PF/Gold

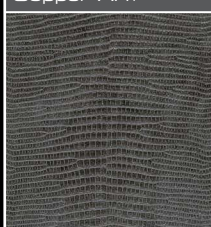
Photo: Minotti



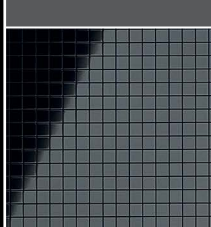
PL 3D ROSES Pearl White PF/Gold



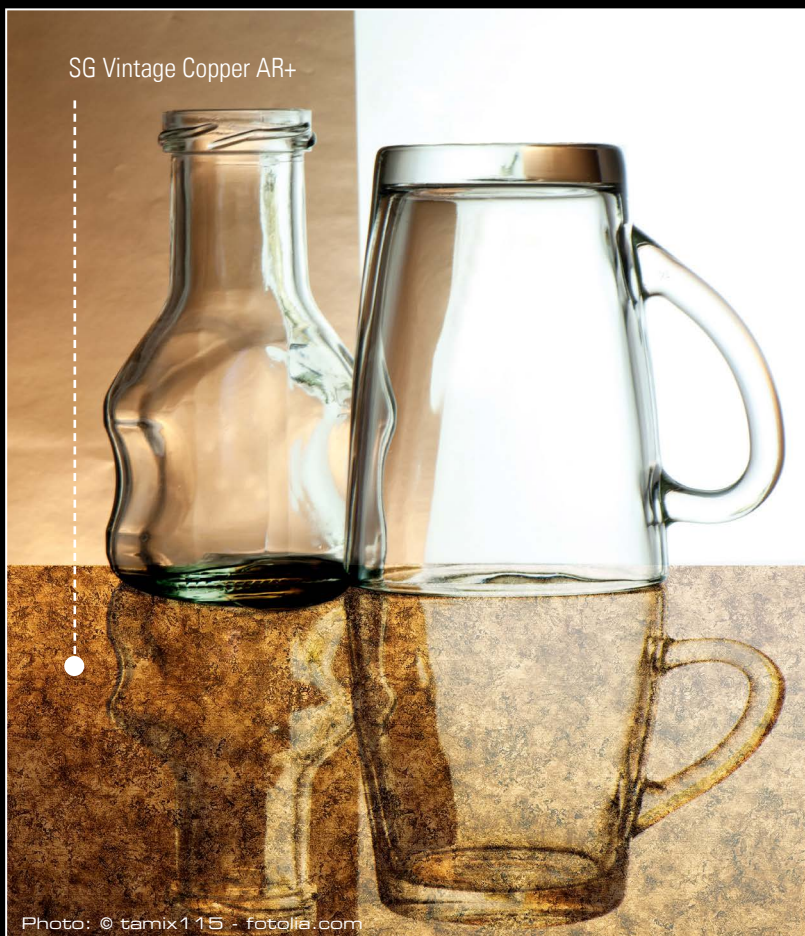
SG Vintage Copper AR+



LL LEGUAN Nero



MS Magic Black 5x5 flex. Classic

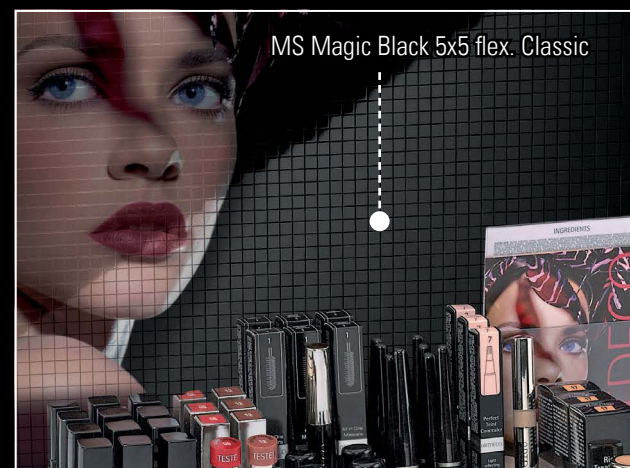


SG Vintage Copper AR+

Photo: © tamix115 - fotolia.com



LL LEGUAN Nero



MS Magic Black 5x5 flex. Classic



DM MONSOON
Vintage Brown



AC MOTION ONE
Creme



DM GOLD



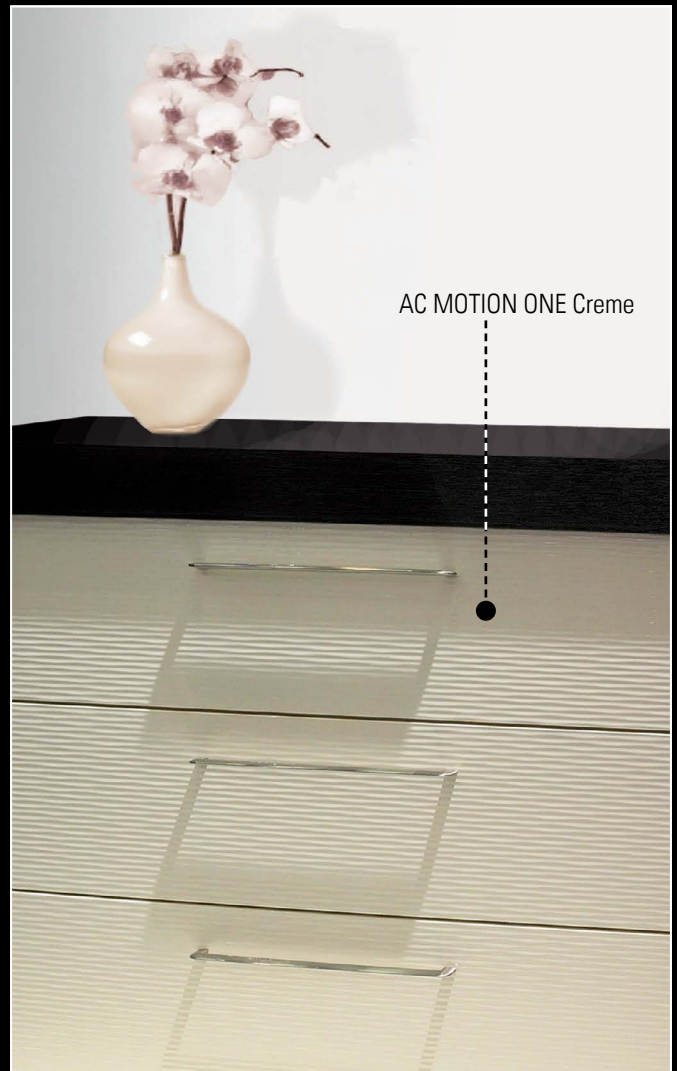
DM MONSOON Vintage Brown

Photo: © Berni - fotolia.com



DM GOLD

Photo: Etienne A



AC MOTION ONE Creme

	Artikel Article Article Артикул формат	Lagerformat Stock dim. Format en stock Складской	Art.-Nr. NA Art.-no. NA Réf. NA Номер артикула NA	Art.-Nr. SA Art.-no. SA Réf. SA Номер артикула SA	Warengruppe Product group Gamme de produits Группа товаров
●●●●	LL Bianco matt ZN 200/Black	2600x1000x3,3	15248	15250	leather-line
●●●○	LL FLORAL White/Silver matt	2612x1000x2,9	13418	13414	leather-line
●●●○	LL FLORAL Vintage Silver/Silver	2612x1000x2,9	17266	17267	leather-line
●●●○	CR CRISTAL ROMBO 85 Nero matt/Silver	2612x1000x5,24	–	15034	leather-line
●●●○	LL LEGUAN Silver	2600x1000x1,5	12883	12893	leather-line
●●●○	LL LEGUAN Copper	2600x1000x1,5	12884	12894	leather-line
●●●○	LL LEGUAN Nero	2600x1000x1,5	14778	14797	leather-line
●●●●	LL Dark Brown	2600x1000x2,1	12935	12978	leather-line
●●●○	LL REGGAE	2600x1000x1,2	14295	14303	leather-line
●●●○	LL LEGUAN Blue	2600x1000x1,5	16985	16986	leather-line
●●●○	PL 3D ROSES Pearl White PF/Gold	2600x1000x1,3	16443	16444	punch-line 3D
●●●○	PL O 5-15-15 Silver brushed matt AR	2600x1000x1	16449	16450	punch-line
●●●○	DM Skyblue	2600x1000x1	10217	10219	deco-line
●●●○	DM Silver AR23	2600x1000x1	14406	14408	deco-line
●●●○	DM Gold	2600x1000x2	15296	–	deco-line
●●●○	DM Brass brushed matt AR	2600x1000x1	10181	10187	deco-line
●●●○	DM Copper brushed	2000x1000x1	10178	10186	deco-line
●●●○	DM Silver brushed	2000x1000x2	12118	11502	deco-line
●●●○	DM Brass brushed matt AR	2600x1000x1	15290	15298	deco-line
●●●○	DM Copper brushed	2600x1000x1	12418	12432	deco-line
●●●○	DM Silver brushed	2600x1000x1	10291	10298	deco-line
●●●○	DM MONSOON Vintage Brown	2000x1000x1	10286	10296	deco-line
●●●○	DM MONSOON Vintage Brown	2600x1000x1	17033	17037	deco-line
●●●●	MS Magic Black 5x5 flex. Classic	980x980x1,2	–	13475	MultiStyle
●●●○	MS White Glaze 3x6 flex.	980x960x1,2	–	17046	MultiStyle
●●●○	MS Silver 3x6 flex. Classic	980x980x1,2	–	10652	MultiStyle
●●●○	MS Gold 3x3 flex. Classic	980x980x1,2	–	10592	MultiStyle
●●●●	AC MOTION TWO Creme	2600x1000x1,1	15784	15786	acrylic-line
●●●○	SL IMPACT Antique Brass	2690x1220x1,1	15942	15950	acrylic-line
●●●○	SL SQUARE 3 HGS	2612x1000x1,6	17234	17235	structure-line
●●●○	SL RACE Vintage Copper/Silver	2612x1000x1,7	11272	11273	structure-line
●●●○	SL RACE Vintage Copper/Silver	2612x1000x1,7	17240	17241	structure-line
●●●○	SL URBAN Titan	2612x1000x2,2	14784	14803	structure-line
●●●○	SG COCKTAIL Sapphire AR+	2600x1000x3,3	16998	17001	SibuGlas
●●●○	SG Vintage Copper AR+	2600x1000x2,8	17198	17200	SibuGlas
●●●●	PR M 58 Silver PF met	2705x22	–	11014	profiles
●●●○	PR M 58 Silver PF gloss	2705x22	–	11013	profiles
●●●○	PR S18 Vintage Silver	2705x18	–	17305	profiles
●●●●	PR M 242 CR STELLA Nero matt	2705x24,2	–	15691	profiles

NA	SA	P	D	GB	F	RUS			
nicht klebend	stark klebend	bedruckbar		non-adhesive	strongly adhesive	suitable for printing	не самоклеющийся	сильно самоклеющийся	Пригодный для запечатывания.
●●●●	Feuchtraumeignung			wet room suitability		apte à résister à l'humidité ambiante	Пригодно для влажных помещений		
●●●○	Feuchtraumeignung, Material reagiert sensibler auf Spritzwasser → entfernen der Feuchtigkeit empfohlen.			Wet room suitability, but material reacts more sensitively to sprinkling water removing of moisture is recommended.		La matière est sensible à l'exposition directe à l'eau → exposition déconseillée.	Пригодно для влажных помещений, материал чувствительно реагирует на брызги воды, рекомендуется удаление влаги		
☒	zur PVA-Verklebung vorbehandelt erhältlich			available with pre-treatment for PVA bonding		Disponible en version "pré-traitement pour encollage PVA".	в наличии панели специально подготовленные для запрессовывания клеями ПВА.		
☒	Die NA-Ausführung dieses Artikels ist auch in schwerentflammbar erhältlich.			A flame-retardant NA version of this item is also available.		La finition NA de cet article est également disponible en matériau résistant au feu.	Поставляется также, как трудновоспламеняемый вариант без клея.		
i	Die Produkte aus dem Lagerprogramm entsprechen den Brandschutzbestimmungen nach DIN 4102 B2.			The products from the stock programme meet DIN 4102 B2 fire protection stipulations.		Les produits de ce programme de stock correspondent à la norme DIN4102 B2.	Наша складская программа соответствует противопожарной безопасности согласно DIN 4102 B2.		
	Produktionsbedingt können die tatsächlichen Materialstärken/Relieffhöhen gering von den angegebenen Werten abweichen.			For production reasons, the actual material thicknesses/relief heights may deviate slightly from the stated values.		En fonction de la production, les épaisseurs/la hauteur des reliefs des matériaux peuvent être légèrement différentes des valeurs indiquées.	По технологии производства фактические значения толщины материала или высоты рельефа могут незначительно отличаться от указанных значений.		
	Produktionsbedingt können geringfügige Farbabweichungen auftreten. Änderungen und Druckfehler vorbehalten.			Slight, production-related colour fluctuations are possible. Changes and misprints excepted.		Fluctuations de coloris légères possibles, en relation au mode de production. Sauf erreurs de frappe et modifications.	В результате производства могут иметь место небольшие отклонения по цвету и декору. Изменения и опечатки допустимы.		
☒	Detailliertere technische Informationen zu den einzelnen Produkten finden Sie in unserem OVERVIEW – Version 2 Prospekt.			Explicit technical information about individual products you will find in our OVERVIEW - Version 2 brochure.		Vous trouverez des informations techniques détaillées pour chaque produit dans notre catalogue OVERVIEW – Version 2.	Более подробную техническую информацию об отдельных продуктах Вы найдёте в проспекте OVERVIEW – Version 2		

