

FLAME RETARDANT

EN 13501-1



SIBU
DESIGN



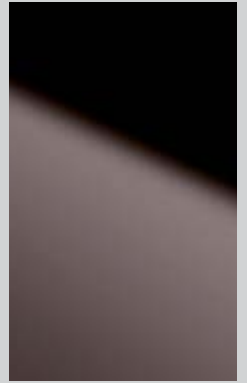
DM Silver SE
2600x1000x1 / NA 10371



DM Silver H23 SE
2600x1000x1 / NA 11721



DM Fashion Grey SE
2600x1000x1 / NA 14316



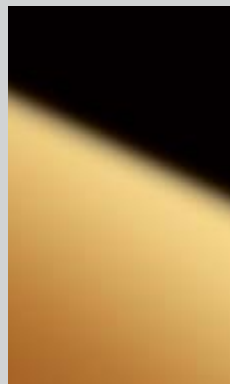
DM Anthracite SE
2600x1000x1 / NA 10127



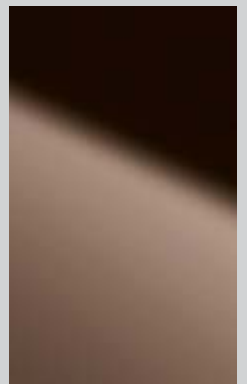
DM Champagne SE
2600x1000x1 / NA 17693



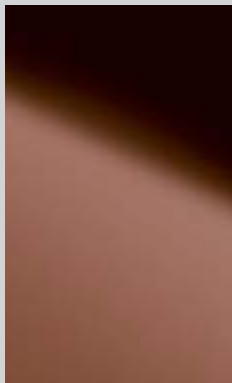
DM Brass SE
2600x1000x1 / NA 10140



DM Gold SE
2600x1000x1 / NA 13338



DM Brown SE
2600x1000x1 / NA 17700



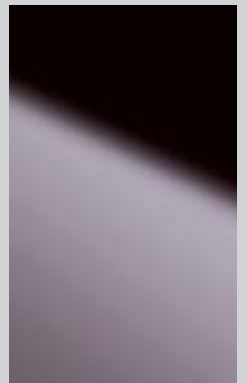
DM Bronze SE
2600x1000x1 / NA 17701



DM Copper SE
2600x1000x1 / NA 17702



DM Rose SE
2600x1000x1 / NA 17702



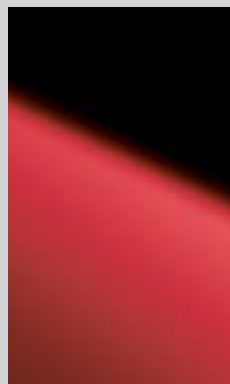
DM Viola SE
2600x1000x1 / NA 17703



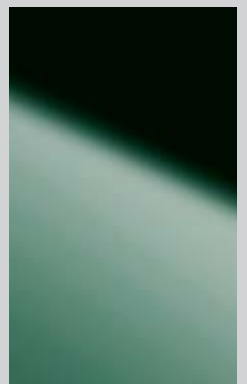
DM Iceblue SE
2600x1000x1 / NA 17704




DM Skyblue SE
2600x1000x1 / NA 12848




DM Fashion Red SE
2600x1000x1 / NA 17705



DM Mint SE
2600x1000x1 / NA 17706

PRODUKTEIGENSCHAFTEN	PRODUCT CHARACTERISTICS	CARACTÉRISTIQUES DES PRODUITS	СВОЙСТВА ПРОДУКЦИИ	
nicht klebend	non-adhesive	non adhésif	без клеевого слоя	NA
Trägermaterial	Base material	Matière porteuse	Подложка	PVC
Oberflächenmaterial	Surface material	Matière de surface	Материал на поверхности	PET
Temperaturbeständigkeit	Temperature stability	Températures admissibles	Теплостойкость	< 60 °C
Feuchtraumeignung	Wet room suitability	Convenance à l'ambiance humide	Влагостойкость	●●●○
Abriebeständigkeit	Abrasion resistance	Résistance à l'abrasion	Устойчивость к истиранию	●●●○○○ ●●○○○○○ DM Silver H23
Gerollt verpackbar	Rolled packable	Apte à être roulé en carton	Упаковка в рулон	✓

VERARBEITUNG	PROCESSING	TRANSFORMATION	ОБРАБОТКА	
Schneiden, Stanzen	Cutting, punching	Couper, emboutir	Раскрой, высечка	✓
Bohren	Drilling	Percer	Сверление	✓
Sägen, Fräsen	Sawing, milling	Scier, fraiser	Распил, фрезерование	✓
Abkanten	Hot bending	Pliage à chaud	Термогибка	✓
Min. Biegeradius	Min. bending radius	Rayon mini de pliage	Минимальный радиус изгиба	200 mm
Zuschnitte	Cuttings	Découpes spéciales	Кроеные детали	✓
Kleber SIBUKLE D22 HV Spachtel A1	Glue SIBUKLE D22 HV Spatula A1	Colle SIBUKLE D22 HV Spatule A1	клей SIBUKLE D22 HV Шпатель A1	✓
bedruckbar	suitable for printing	imprimable	Пригодный для запечатывания	✓

Weitere Ausführungen:

Other versions / Autres versions / **дополнительные цвета:**

DM Silver AR12 SE
DM Silver AR23 SE
DM Gold AR SE
DM Anthracite AR SE

Foto / Produkteigenschaften / Verarbeitung:

Photo / product characteristics / processing

Photo / caractéristiques des produits / transformation

ФОТОГРАФИЯ / СВОЙСТВА ПРОДУКЦИИ / ОБРАБОТКА



DM Silver brushed SE
2600x1000x1 / NA 12308



DM HGS SE
2600x1000x1 / NA 14703



DM Champagne brushed SE
2600x1000x1 / NA 17709



DM Titan brushed SE
2600x1000x1 / NA 17710



DM Brass brushed matt AR SE
2600x1000x1 / NA 16261



DM Gold brushed matt AR SE
2600x1000x1 / NA 17708



DM Copper brushed SE
2600x1000x1 / NA 17711


Weitere Ausführungen:


Other versions / Autres versions / дополнительные цвета:

DM Silver brushed matt AR SE
DM HGS matt AR SE
DM Grey brushed matt AR SE

Foto / Produkteigenschaften / Verarbeitung:

Photo / product characteristics / processing
Photo / caractéristiques des produits / transformation
ФОТОГРАФИЯ / СВОЙСТВА ПРОДУКЦИИ / ОБРАБОТКА

PRODUKTEIGENSCHAFTEN	PRODUCT CHARACTERISTICS	CARACTÉRISTIQUES DES PRODUITS	СВОЙСТВА ПРОДУКЦИИ	
nicht klebend	non-adhesive	non adhésif	без клеевого слоя	NA
Trägermaterial	Base material	Matière porteuse	Подложка	PVC
Oberflächenmaterial	Surface material	Matière de surface	Материал на поверхности	PET
Temperaturbeständigkeit	Temperature stability	Températures admissibles	Теплостойкость	< 60 °C
Feuchtraumeignung	Wet room suitability	Convenance à l'ambiance humide	Влагостойкость	●●●○
Abriebbeständigkeit	Abrasion resistance	Résistance à l'abrasion	Устойчивость к истиранию	●●●●●●
Gerollt verpackbar	Rolled packable	Apte à être roulé en carton	Упаковка в рулон	✓

VERARBEITUNG	PROCESSING	TRANSFORMATION	ОБРАБОТКА	
Schneiden, Stanzen	Cutting, punching	Couper, emboutir	Раскрой, высечка	✓
Bohren	Drilling	Percer	Сверление	✓
Sägen, Fräsen	Sawing, milling	Scier, fraiser	Распил, фрезерование	✓
Abkanten	Hot bending	Pliage à chaud	Термогибка	✓
Min. Biegeradius	Min. bending radius	Rayon mini de pliage	Минимальный радиус изгиба	200 mm
Zuschnitte	Cuttings	Découpes spéciales	Кроеные детали	✓
Kleber SIBUKLE D22 HV Spachtel A1	Glue SIBUKLE D22 HV Spatula A1	Colle SIBUKLE D22 HV Spatule A1	клей SIBUKLE D22 HV Шпатель A1	✓





DM Silver PF met SE
2600x1000x1 / NA 14704



DM Champagne PF met SE
2600x1000x1 / NA 17712



DM Titan PF met SE
2600x1000x1 / NA 17714



DM Smoke PF met SE
2600x1000x1 / NA 17713



DM Vintage Silver SE
2600x1000x1 / NA 17716



DM Vintage Copper SE
2600x1000x1 / NA 17715

PRODUKTEIGENSCHAFTEN	PRODUCT CHARACTERISTICS	CARACTÉRISTIQUES DES PRODUITS	СВОЙСТВА ПРОДУКЦИИ	i
nicht klebend	non-adhesive	non adhésif	без клеевого слоя	NA
Trägermaterial	Base material	Matière porteuse	Подложка	PVC
Oberflächenmaterial	Surface material	Matière de surface	Материал на поверхности	PRINT
Temperaturbeständigkeit	Temperature stability	Températures admissibles	Теплостойкость	< 60 °C
Feuchtraumeignung	Wet room suitability	Convenance à l'ambiance humide	Влагостойкость	●●●● ●●●○ DM Vintage
Abriebbeständigkeit	Abrasion resistance	Résistance à l'abrasion	Устойчивость к истиранию	●●●●●● ●●●●●○ DM Vintage
Gerollt verpackbar	Rolled packable	Apte à être roulé en carton	Упаковка в рулон	✓

VERARBEITUNG	PROCESSING	TRANSFORMATION	ОБРАБОТКА	i
Schneiden, Stanzen	Cutting, punching	Couper, emboutir	Раскрой, высечка	✓
Bohren	Drilling	Percer	Сверление	✓
Sägen, Fräsen	Sawing, milling	Scier, fraiser	Распил, фрезерование	✓
Abkanten	Hot bending	Pliage à chaud	Термогибка	✓
Min. Biegeradius	Min. bending radius	Rayon mini de pliage	Минимальный радиус изгиба	200 mm
Zuschnitte	Cuttings	Découpes spéciales	Кроеные детали	✓
Kleber SIBUKLE D22 HV Spachtel A1	Glue SIBUKLE D22 HV Spatula A1	Colle SIBUKLE D22 HV Spatule A1	клей SIBUKLE D22 HV Шпатель A1	✓
bedruckbar	suitable for printing	imprimable	Пригодный для запечатывания	✓

Weitere Ausführungen:

Other versions / Autres versions / дополнительные цвета:

DM Silver PF met touch 1 SE
DM Champagne PF met touch 1 SE
DM Titan PF met touch 1 SE
DM Smoke PF met touch 1 SE
DM Zebrano graphite touch 1 SE

DM Makassar touch 1 SE
DM Tobacco touch 1 SE
DM LUXURY Bronze SE
DM LUXURY Gold SE
DM Galaxy Silver SE

Foto / Produkteigenschaften / Verarbeitung:

Photo / product characteristics / processing
Photo / caractéristiques des produits / transformation
ФОТОГРАФИЯ / СВОЙСТВА ПРОДУКЦИИ / ОБРАБОТКА



SL URBAN Titan SE
2612x1000x2,2 / NA 17879



SL DAKOTA Metal SE
2612x1000x2 / NA 17880



SL BUBBLE Silver PF met/Silver SE
2612x1000x2 / NA 17881



SL WAVE 1 Silver PF met SE
2612x1000x1,2 / NA 17882

Weitere Ausführungen:

Other versions / Autres versions / дополнительные цвета:

SL URBAN Grey SE
SL URBAN Light Grey SE
SL LAVA Copper SE
SL LAVA Grey SE
SL IMPERIAL Vintage Copper SE
SL ALISE Vintage Copper SE
SL BUBBLE Zebrano graphite/Silver SE

SL MOTION ONE Silver AR23 SE
SL MOTION ONE Anthracite AR SE
SL MOTION TWO Silver brushed matt AR SE
SL MOTION TWO Grey brushed matt AR SE
SL CROCO Silver PF met/Silver SE
SL CROCO Smoke PF met/Silver SE
SL WAVE 1 Silver SE


SL WAVE 1 Silver brushed matt AR SE
SL WAVE Silver SE
SL WAVE Silver brushed matt AR SE
SL WAVE Silver PF met SE
SL STEP 5 Silver brushed matt AR SE
SL STEP 5 HGS SE
SL STEP 5 Silver PF met SE


SL SQUARE 3 Silver brushed SE
SL SQUARE 3 HGS SE
SL SQUARE 3 Silver PF met SE
SL RACE Silver SE
SL MOTION ONE Pearl White PF SE

Foto / Produkteigenschaften / Verarbeitung:

Photo / product characteristics / processing
Photo / caractéristiques des produits / transformation
ФОТОГРАФИЯ / СВОЙСТВА ПРОДУКЦИИ / ОБРАБОТКА

STRUCTURE-LINE

PRODUKTEIGENSCHAFTEN	PRODUCT CHARACTERISTICS	CARACTÉRISTIQUES DES PRODUITS	СВОЙСТВА ПРОДУКЦИИ	
nicht klebend	non-adhesive	non adhésif	без клеевого слоя	NA
Trägermaterial	Base material	Matière porteuse	Подложка	PVC
Oberflächenmaterial	Surface material	Matière de surface	Материал на поверхности	PET
Temperaturbeständigkeit	Temperature stability	Températures admissibles	Теплостойкость	< 60 °C
Feuchtraumeignung	Wet room suitability	Convenance à l'ambiance humide	Влагостойкость	●●●○
Abriebbeständigkeit	Abrasion resistance	Résistance à l'abrasion	Устойчивость к истиранию	●●●●●●●●
Gerollt verpackbar	Rolled packable	Apte à être roulé en carton	Упаковка в рулон	✓

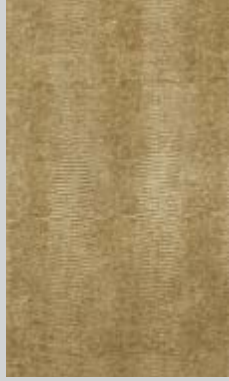
VERARBEITUNG	PROCESSING	TRANSFORMATION	ОБРАБОТКА	
Schneiden, Stanzen	Cutting, punching	Couper, emboutir	Раскрой, высечка	✓
Bohren	Drilling	Percer	Сверление	✓
Sägen, Fräsen	Sawing, milling	Scier, fraiser	Распил, фрезерование	✓
Abkanten	Hot bending	Pliage à chaud	Термогибка	✓
Min. Biegeradius	Min. bending radius	Rayon mini de pliage	Минимальный радиус изгиба	200 mm
Zuschnitte	Cuttings	Découpes spéciales	Кроеные детали	✓
Kleber SIBUKLE D22 HV Spachtel A1	Glue SIBUKLE D22 HV Spatula A1	Colle SIBUKLE D22 HV Spatule A1	клей SIBUKLE D22 HV Шпатель A1	✓



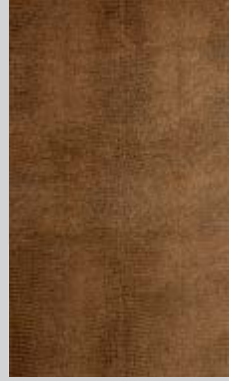
LEATHER-LINE



LL LEGUAN Silver SE
2600x1000x1,8 / **NA** 15789



LL LEGUAN Gold SE
2600x1000x1,8 / **NA** 17717



LL LEGUAN Copper SE
2600x1000x1,8 / **NA** 15790



LL LEGUAN Nero SE
2600x1000x1,8 / **NA** 15788



LL Bianco matt SE
2600x1000x2 / **NA** 17718



LL Creme matt SE
2600x1000x2 / **NA** 17719



LL Dark Brown matt SE
2600x1000x2 / **NA** 17720





LL Nero matt SE
2600x1000x2 / **NA** 17721



LL FLORAL White/Silver matt SE
2612x1000x2,9 / **NA** 17883



PRODUKTEIGENSCHAFTEN	PRODUCT CHARACTERISTICS	CARACTÉRISTIQUES DES PRODUITS	СВОЙСТВА ПРОДУКЦИИ	
nicht klebend	non-adhesive	non adhésif	без клеевого слоя	NA
Trägermaterial	Base material	Matière porteuse	Подложка	PVC
Oberflächenmaterial	Surface material	Matière de surface	Материал на поверхности	PU
Temperaturbeständigkeit	Temperature stability	Températures admissibles	Теплостойкость	< 60 °C
Feuchtraumeignung	Wet room suitability	Convenance à l'ambiance humide	Влагостойкость	●●●● ●●●○ LL Leguan
Gerollt verpackbar	Rolled packable	Apte à être roulé en carton	Упаковка в рулон	✓

VERARBEITUNG	PROCESSING	TRANSFORMATION	ОБРАБОТКА	
Schneiden, Stanzen	Cutting, punching	Couper, emboutir	Раскрой, высечка	✓
Bohren	Drilling	Percer	Сверление	✓
Sägen	Sawing	Scier	Распил	✓
Abkanten	Hot bending	Pliage à chaud	Термогибка	✓
Min. Biegeradius	Min. bending radius	Rayon mini de pliage	Минимальный радиус изгиба	200 mm
Zuschnitte	Cuttings	Découpes spéciales	Кроеные детали	✓
Kleber SIBUKLE D22 HV Spachtel A1	Glue SIBUKLE D22 HV Spatula A1	Colle SIBUKLE D22 HV Spatule A1	клей SIBUKLE D22 HV Шпатель A1	✓

Weitere Ausführungen:

Other versions / Autres versions / **дополнительные цвета:**

LL COLLAGE Nero matt SE
LL SNAKE Bianco matt SE
LL SNAKE Nero matt SE
LL CREPA Nero matt SE
LL ALISE White/Gold SE
LL ALISE White/Silver SE
LL ALISE Black SE

LL IMPERIAL White/Gold SE
LL IMPERIAL White/Silver SE
LL IMPERIAL Black/Silver SE
LL FLORAL Black/Silver matt SE
LL FLORAL White/Gold matt SE
LL MYSTIQUE Gold/Silver SE
LL MYSTIQUE Vintage Silver/Silver SE

LL MYSTIQUE Black/Silver SE
LL MYSTIQUE White/Silver SE
LL MYSTIQUE White/Gold SE
LL ORIENT Vintage Silver/Silver SE
LL ORIENT Gold/Silver SE
LL FLORAL Vintage Silver/Silver SE
LL Vintage Silver SE

LL Vintage Copper SE
LL ANTIGUA Gold SE
LL OXY Steel SE
LL OXY Terra SE

Foto / Produkteigenschaften / Verarbeitung:

Photo / product characteristics / processing

Photo / caractéristiques des produits / transformation

ФОТОГРАФИЯ / СВОЙСТВА ПРОДУКЦИИ / ОБРАБОТКА



PRODUKTINFOS / PRODUCT FEATURES / CARACTÉRISTIQUES PRODUIT / информация о продукции

Für detailliertere Informationen besuchen Sie bitte unsere Homepage oder wenden Sie sich bitte an unser Verkaufsteam.

For detailed information, please see our homepage or contact our Sales Team.

Pour des informations détaillées veuillez visiter notre site internet ou vous mettre en contact avec notre Service des Ventes.

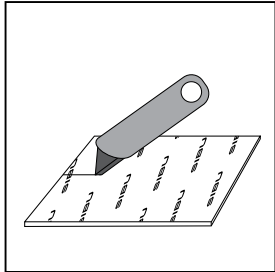
Для получения подробной информации, пожалуйста, посетите наш сайт или обратитесь с нашим специалистом из отдела продаж.

www.sibu.at/de/verarbeitungshinweise.html

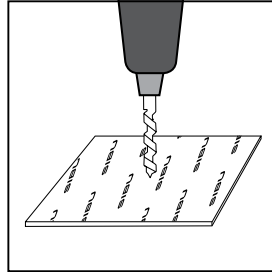
www.sibu.at/en/processing.html

www.sibu.at/fr/conseils-de-mise-en-uvre.html

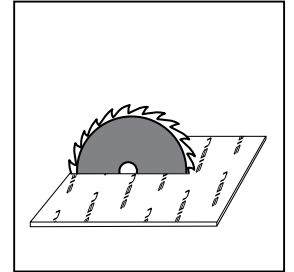
www.sibu.at/ru/rekomendacii-po-obrabotke.html



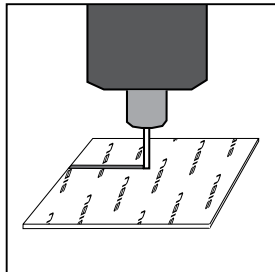
Schneiden
Cutting
Coupage
раскрой



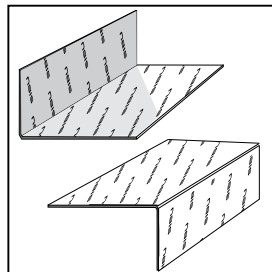
Bohren
Drilling
Perçage
сверление



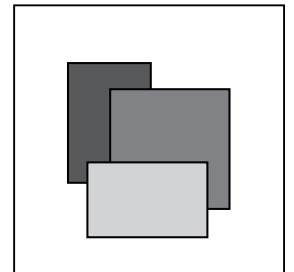
Sägen
Sawing
Sciage
распил



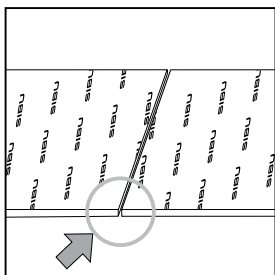
Fräsen
Milling
Fraisage
фрезерование



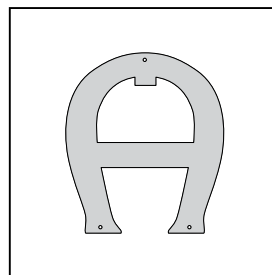
Abkanten
Bending
Courbure
термогибка



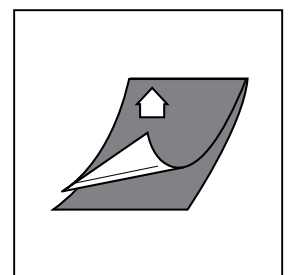
Individuelle Zuschnitte lieferbar
Customized cuttings possible
Coupe individuelle possible
Кроеные детали по запросу возможны



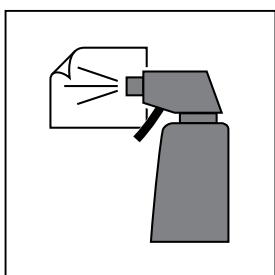
Dehnfuge beachten
Please note the expansion gap
Faire attention à la jointure de dilatation
необходим компенсационный шов



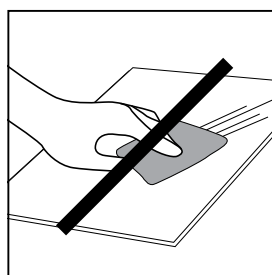
Stanzen
Punching
Perforation
Вырубка



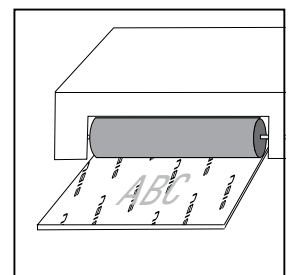
Oberflächenschutzfolie
Surface protection film
Film de protection de surface
защитная плёнка декоративной поверхности



Reinigungshinweise beachten
Please note the cleaning instructions
Veuillez observer les instructions de nettoyage
соблюдайте рекомендации по уходу



Abriebfest siehe Produkteigenschaften
Scratch resistant see product characteristics
Résistant à l'abrasion voir caractéristiques des produits
Устойчивые к истиранию, см. свойства продукции



Bedruckbar siehe Verarbeitung
Suitable for printing see processing
Imprimable voir transformation
Пригодны к запечатыванию, см. рекомендации.

DECO-LINE:

EN 13501-1

Artikel Article Article Артикул	Lagerformat Stock dim. Format en stock Размер листа	Art.-Nr. NA Art.-no. NA Réf. NA Номер артикула NA	Brandverhalten Fire behaviour Comportement au feu Поведение при возгорании	Rauchverhalten Smoke behaviour Comportement quant à l'émission de fumées Дымообразование	Brennendes Abtropfen/Abfallen Dripping/dropping of burning parts Formation de gouttes enflammées Горящие капли или осколки		
DM Silver SE	2600x1000x1	10371	B	s	2	d	0
DM Silver H23 SE	2600x1000x1	11721	B	s	2	d	0
DM Fashion Grey SE	2600x1000x1	14316	B	s	2	d	0
DM Anthracite SE	2600x1000x1	10127	B	s	2	d	0
DM Champagne SE	2600x1000x1	17693	B	s	2	d	0
DM Brass SE	2600x1000x1	10140	B	s	2	d	0
DM Gold SE	2600x1000x1	13338	B	s	2	d	0
DM Brown SE	2600x1000x1	17700	B	s	2	d	0
DM Bronze SE	2600x1000x1	17701	B	s	2	d	0
DM Copper SE	2600x1000x1	17707	B	s	2	d	0
DM Rose SE	2600x1000x1	17702	B	s	2	d	0
DM Viola SE	2600x1000x1	17703	B	s	2	d	0
DM Iceblue SE	2600x1000x1	17704	B	s	2	d	0
DM Skyblue SE	2600x1000x1	12848	B	s	2	d	0
DM Fashion Red SE	2600x1000x1	17705	B	s	2	d	0
DM Mint SE	2600x1000x1	17706	B	s	2	d	0
+ DM Silver AR12 SE		+ DM Silver AR23 SE	+ DM Gold AR SE	+ DM Anthracite AR SE			

DECO-LINE brushed:

DM Silver brushed SE	2600x1000x1	12308	B	s	2	d	0
DM HGS SE	2600x1000x1	14703	B	s	2	d	0
DM Champagne brushed SE	2600x1000x1	17709	B	s	2	d	0
DM Titan brushed SE	2600x1000x1	17710	B	s	2	d	0
DM Brass brushed matt AR SE	2600x1000x1	16261	B	s	2	d	0
DM Gold brushed matt AR SE	2600x1000x1	17708	B	s	2	d	0
DM Copper brushed SE	2600x1000x1	17711	B	s	2	d	0
+ DM Silver brushed matt AR SE	+ DM HGS matt AR SE	+ DM Grey brushed matt AR					

DECO-LINE PF:

DM Silver PF met SE	2600x1000x1	14704	B	s	2	d	0
DM Champagne PF met SE	2600x1000x1	17712	B	s	2	d	0
DM Titan PF met SE	2600x1000x1	17714	B	s	2	d	0
DM Smoke PF met SE	2600x1000x1	17713	B	s	2	d	0
DM Vintage Silver SE	2600x1000x1	17716	B	s	2	d	0
DM Vintage Copper SE	2600x1000x1	17715	B	s	2	d	0
+ DM Silver PF met touch 1 SE + DM Zebrano graphite touch 1 SE + DM LUXURY Gold SE	+ DM Champagne PF met touch 1 SE + DM Makassar touch 1 SE + DM Galaxy Silver SE	+ DM Titan PF met touch 1 SE + DM Tobacco touch 1 SE	+ DM Smoke PF met touch 1 SE + DM LUXURY Bronze SE				

STRUCTURE-LINE:

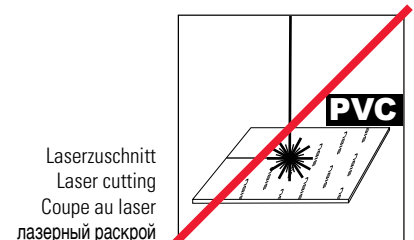
SL URBAN Titan SE	2612x1000x2,2	17879	B	s	2	d	0
SL DAKOTA Metal SE	2612x1000x2	17880	B	s	2	d	0
SL BUBBLE Silver PF met Silver SE	2612x1000x2	17881	B	s	2	d	0
SL WAVE 1 Silver PF met SE	2612x1000x1,2	17882	B	s	2	d	0
+ SL URBAN Grey SE + SL IMPERIAL Vintage Copper SE + SL MOTION ONE Anthracite AR SE + SL CROCO Smoke PF met/Silver SE + SL WAVE Silver brushed matt AR SE + SL STEP 5 Silver PF met SE + SL RACE Silver SE	+ SL URBAN Light Grey SE + SL ALISE Vintage Copper SE + SL MOTION TWO Silver brushed matt AR SE + SL WAVE 1 Silver SE + SL WAVE Silver PF met SE + SL SQUARE 3 Silver brushed SE + SL MOTION ONE Pearl White PF SE	+ SL LAVA Copper SE + SL BUBBLE Zebrano graphite/Silver SE + SL MOTION TWO Grey brushed matt AR SE + SL WAVE 1 Silver brushed matt AR SE + SL STEP 5 Silver brushed matt AR SE + SL SQUARE 3 HGS SE	+ SL LAVA Grey SE + SL MOTION ONE Silver AR23 SE + SL CROCO Silver PF met/Silver SE + SL WAVE Silver SE + SL STEP 5 HGS SE + SL SQUARE 3 Silver PF met SE				

LEATHER-LINE:

EN 13501-1

Artikel Article Article Артикул	Lagerformat Stock dim. Format en stock Размер листа	Art.-Nr. NA Art.-no. NA Réf. NA Номер артикула NA	Brandverhalten Fire behaviour Comportement au feu Поведение при возгорании	Rauchverhalten Smoke behaviour Comportement quant à l'émission de fumées Дымообразование	Brennendes Abtropfen/Abfallen Dripping/dropping of burning parts Formation de gouttes enflammées Горящие капли или осколки																													
LL LEGUAN Silver SE	2600x1000x1,8	15789	B	s	3	d 0																												
LL LEGUAN Gold SE	2600x1000x1,8	17717	B	s	3	d 0																												
LL LEGUAN Copper SE	2600x1000x1,8	15790	B	s	3	d 0																												
LL LEGUAN Nero SE	2600x1000x1,8	15788	B	s	3	d 0																												
LL Bianco matt SE	2600x1000x2	17718	B	s	3	d 0																												
LL Creme matt SE	2600x1000x2	17719	B	s	3	d 0																												
LL Dark Brown matt SE	2600x1000x2	17720	B	s	3	d 0																												
LL Nero matt SE	2600x1000x2	17721	B	s	3	d 0																												
LL FLORAL White/Silver matt SE	2612x1000x2,9	17883	B	s	3	d 0																												
<table border="0"> <tr> <td>+ LL MYSTIQUE Gold/Silver SE</td> <td>+ LL MYSTIQUE Vintage Silver/Silver SE</td> <td>+ LL MYSTIQUE Black/Silver SE</td> <td>+ LL MYSTIQUE White/Silver SE</td> </tr> <tr> <td>+ LL MYSTIQUE White/Gold SE</td> <td>+ LL ORIENT Vintage Silver/Silver SE</td> <td>+ LL ORIENT Gold/Silver SE</td> <td>+ LL FLORAL Vintage Silver/Silver SE</td> </tr> <tr> <td>+ LL Vintage Silver SE</td> <td>+ LL Vintage Copper SE</td> <td>+ LL COLLAGE Nero matt SE</td> <td>+ LL SNAKE Bianco matt SE</td> </tr> <tr> <td>+ LL SNAKE Nero matt SE</td> <td>+ LL CREPA Nero matt SE</td> <td>+ LL ALISE White/Gold SE</td> <td>+ LL ALISE White/Silver SE</td> </tr> <tr> <td>+ LL ALISE Black SE</td> <td>+ LL IMPERIAL White/Gold SE</td> <td>+ LL IMPERIAL White/Silver SE</td> <td>+ LL IMPERIAL Black/Silver SE</td> </tr> <tr> <td>+ LL FLORAL Black/Silver matt SE</td> <td>+ LL FLORAL White/Gold matt SE</td> <td>+ LL OXY Steel SE</td> <td>+ LL OXY Terra SE</td> </tr> <tr> <td>+ LL ANTIGUA Gold SE</td> <td></td> <td></td> <td></td> </tr> </table>							+ LL MYSTIQUE Gold/Silver SE	+ LL MYSTIQUE Vintage Silver/Silver SE	+ LL MYSTIQUE Black/Silver SE	+ LL MYSTIQUE White/Silver SE	+ LL MYSTIQUE White/Gold SE	+ LL ORIENT Vintage Silver/Silver SE	+ LL ORIENT Gold/Silver SE	+ LL FLORAL Vintage Silver/Silver SE	+ LL Vintage Silver SE	+ LL Vintage Copper SE	+ LL COLLAGE Nero matt SE	+ LL SNAKE Bianco matt SE	+ LL SNAKE Nero matt SE	+ LL CREPA Nero matt SE	+ LL ALISE White/Gold SE	+ LL ALISE White/Silver SE	+ LL ALISE Black SE	+ LL IMPERIAL White/Gold SE	+ LL IMPERIAL White/Silver SE	+ LL IMPERIAL Black/Silver SE	+ LL FLORAL Black/Silver matt SE	+ LL FLORAL White/Gold matt SE	+ LL OXY Steel SE	+ LL OXY Terra SE	+ LL ANTIGUA Gold SE			
+ LL MYSTIQUE Gold/Silver SE	+ LL MYSTIQUE Vintage Silver/Silver SE	+ LL MYSTIQUE Black/Silver SE	+ LL MYSTIQUE White/Silver SE																															
+ LL MYSTIQUE White/Gold SE	+ LL ORIENT Vintage Silver/Silver SE	+ LL ORIENT Gold/Silver SE	+ LL FLORAL Vintage Silver/Silver SE																															
+ LL Vintage Silver SE	+ LL Vintage Copper SE	+ LL COLLAGE Nero matt SE	+ LL SNAKE Bianco matt SE																															
+ LL SNAKE Nero matt SE	+ LL CREPA Nero matt SE	+ LL ALISE White/Gold SE	+ LL ALISE White/Silver SE																															
+ LL ALISE Black SE	+ LL IMPERIAL White/Gold SE	+ LL IMPERIAL White/Silver SE	+ LL IMPERIAL Black/Silver SE																															
+ LL FLORAL Black/Silver matt SE	+ LL FLORAL White/Gold matt SE	+ LL OXY Steel SE	+ LL OXY Terra SE																															
+ LL ANTIGUA Gold SE																																		

- D** mit SIBUKLE D22 HV auf Gipskartonplatten verklebt
- GB** bonded with SIBUKLE D22 HV gypsum plasterboard
- F** Collé avec SIBUKLE D22 HV sur carton plâtre
- RUS** наклеенные клеем SIBUKLE D22 HV на или гипсокартон



INFORMATION DER KLASSIFIZIERUNG VON FLÄCHIGEN BAUSTOFFE
 INFORMATION ON FLAT BUILDING MATERIAL CLASSIFICATION
 INFORMATION CONCERNANT LA CLASSIFICATION DES PRODUITS PLATS
 Информация по классификации листовых отделочных материалов

Brandverhalten / Fire behaviour / Comportement au feu / Поведение при возгорании:

- B schwer entflammbar
 flame-retardant
 difficilement inflammable
 трудновоспламеняемые

Rauchverhalten / Smoke behaviour / Comportement quant à l'émission de fumées/ Дымообразование:

- S2 begrenzte Rauchentwicklung
 restricted smoke emission
 développement limité de fumées
 ограниченное дымообразование
- S3 unbeschränkte Rauchentwicklung
 unrestricted smoke emission
 développement non limité de fumées
 неограниченное дымообразование

Brennendes Abtropfen/Abfallen / Dripping/dropping of burning parts / Formation de gouttes enflammées/

Горящие капли или осколки:

- d0 kein Abtropfen/Abfallen
 no dripping/no dropping
 pas de formation de gouttes enflammées
 никаких капель/осколков



SIBU DESIGN GmbH & CoKG
Jupiterstraße 8, 4452 Ternberg, Austria / Tel.: +43 (0)7256.6025.0
Fax: +43 (0)7256.7020 / E-mail: info@sibu.at / www.sibu.at

sibu.at